

GES-E311 Solenoid Lock

Electronic locking system

Features

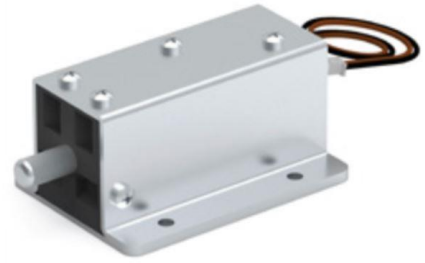
- Compatible with access control systems
- Can be used as push-to-close with a special bracket (sold separately)
- Mechanical override option
- Auto locking
- DC type solenoid
- Solenoid has no polarity

Notes

- Resistance of solenoid varies with the applied voltage
- The solenoid becomes hot (around 80 °C) when continuously energized, precautions should be taken to prevent burns

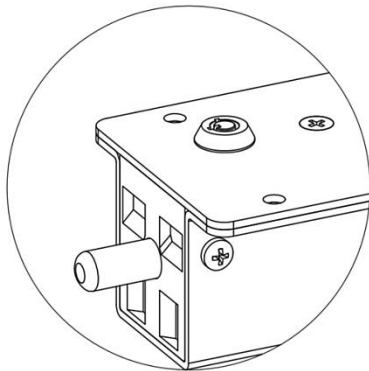
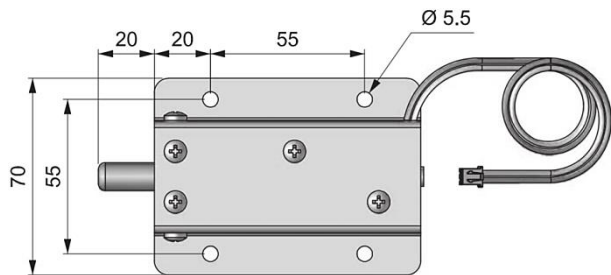
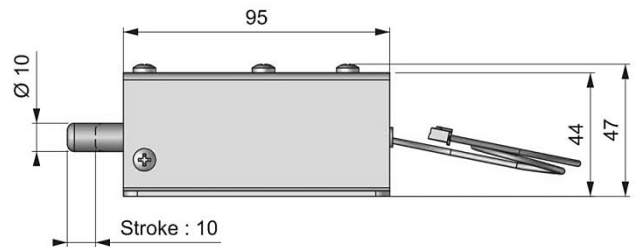
Technical Specifications

- Operating voltage: 24 V DC
- Current consumption: 550 mA
- Power consumption: 13.2 W
- Operating temperature range: -5°C / +40°C
- Cable length: 30 cm
- Stroke: 10 mm

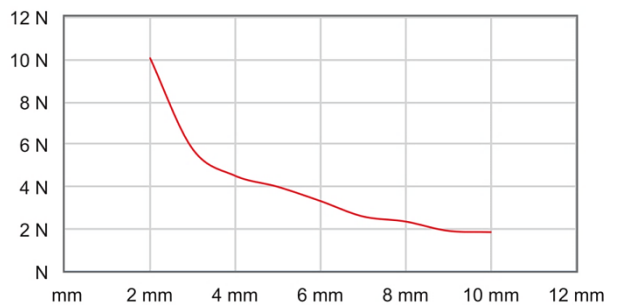


Material

- Body: Steel
- Plunger: Steel
- Bracket: Delrin

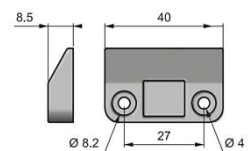


Mechanical override
with high security cylinder



Force - Stroke Graph In Horizontal Installation

Part No.	Type
GES-E311-1	Without Mechanical Override
GES-E311-2	With Mechanical Override
GES-E223	Bracket



Bracket